

BACKBURNER

TROMBONE 1

CARL STROMMEN

SHUFFLE (♩=132)

16



1

(17)

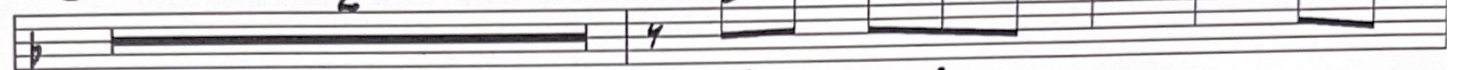
12



17

(29)

2



29

mf

3



32

3

(41)



38

ff

mp



42

GRAD. CRESC.



47

f



TROMBONE 1

57 1ST TIME ONLY

ON CUE

A musical staff for Trombone 1. The staff begins with a key signature of one flat (B-flat) and a common time signature. The notes are: a quarter note G4 with an accent (>) and a fermata, a quarter note F4 with a flat (b), a quarter note E4, a quarter note D4 with a flat (b), a quarter note C4 with a flat (b), a quarter note B3 with a flat (b) and an accent (^), a quarter note A3, and a quarter note G3. A repeat sign (double bar line with two dots) is placed after the G3 note. Following the repeat sign, there are two whole notes: F4 and E4, both with flats (b). A slur is drawn over these two notes. The dynamic marking *mf* is placed below the staff. The instruction "ON CUE" is written above the staff, with a horizontal line extending from the first note of the "ON CUE" section to the right.